



WEST VIEW OF COMMON AREA ON LAKE OKAHUMPKA





OLDER DEVELOPED AREA OF PHASE I











WILL
1912 - 1988

WILL

1912 - 1988









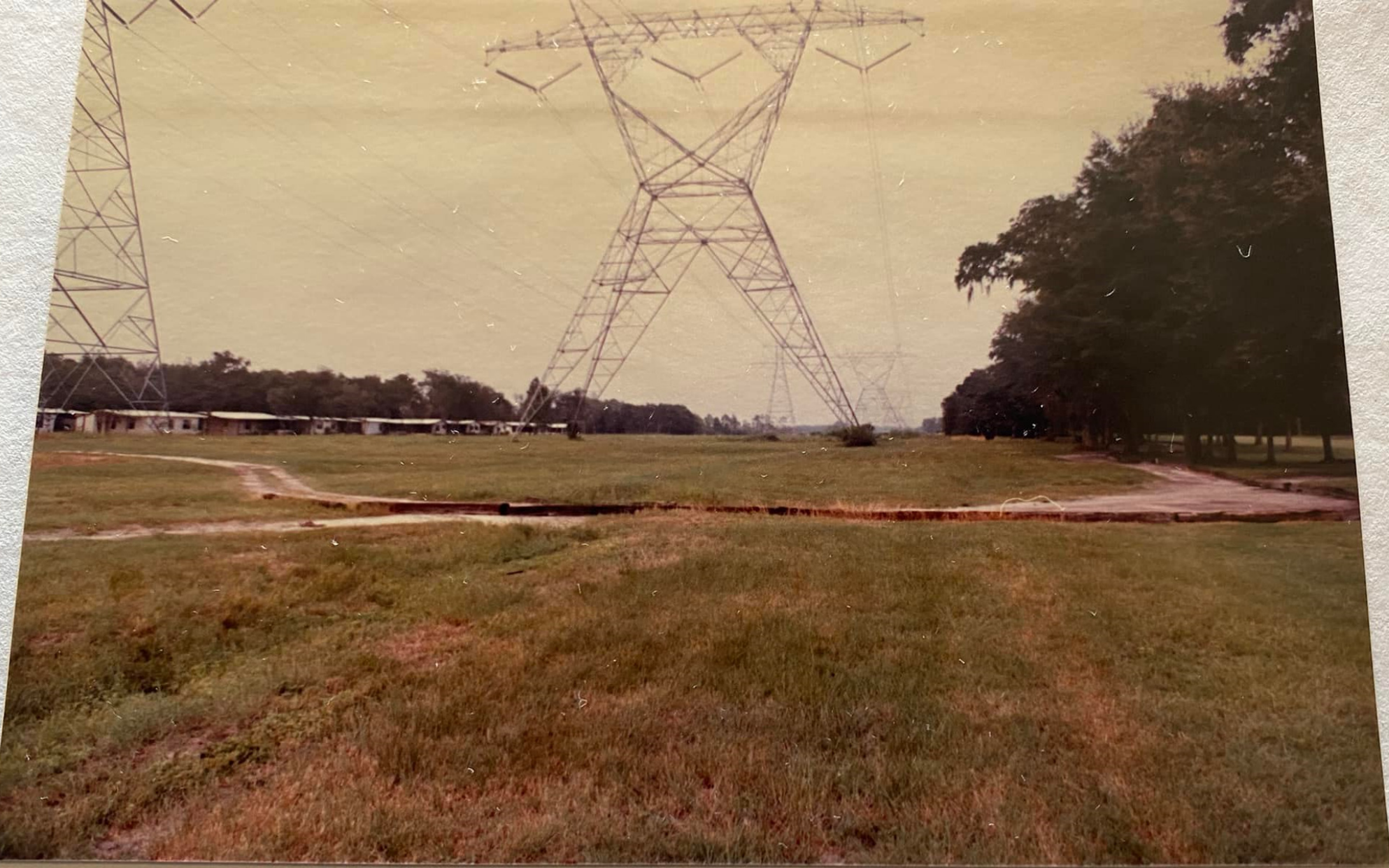




84-139



VIEW OF MAIN ENTRANCE OF CONTINENTAL COUNTRY CLUB
ON STATE ROAD 44



EAST VIEW OF FLORIDA POWER RIGHT-OF-WAY EASEMENT
WITH PHASE III ON THE RIGHT AND PHASE I
ON THE LEFT



SOUTH VIEW OF HOLE 12 GREEN
WITH GOLF FRONTAGE OF PHASE III TO THE REAR



TYPICAL PHASE I DEVELOPMENT



EAST VIEW ALONG STATE ROAD 44
WITH SUBJECT ON THE RIGHT





11

111



TYPICAL DEVELOPING AREA IN PHASE II





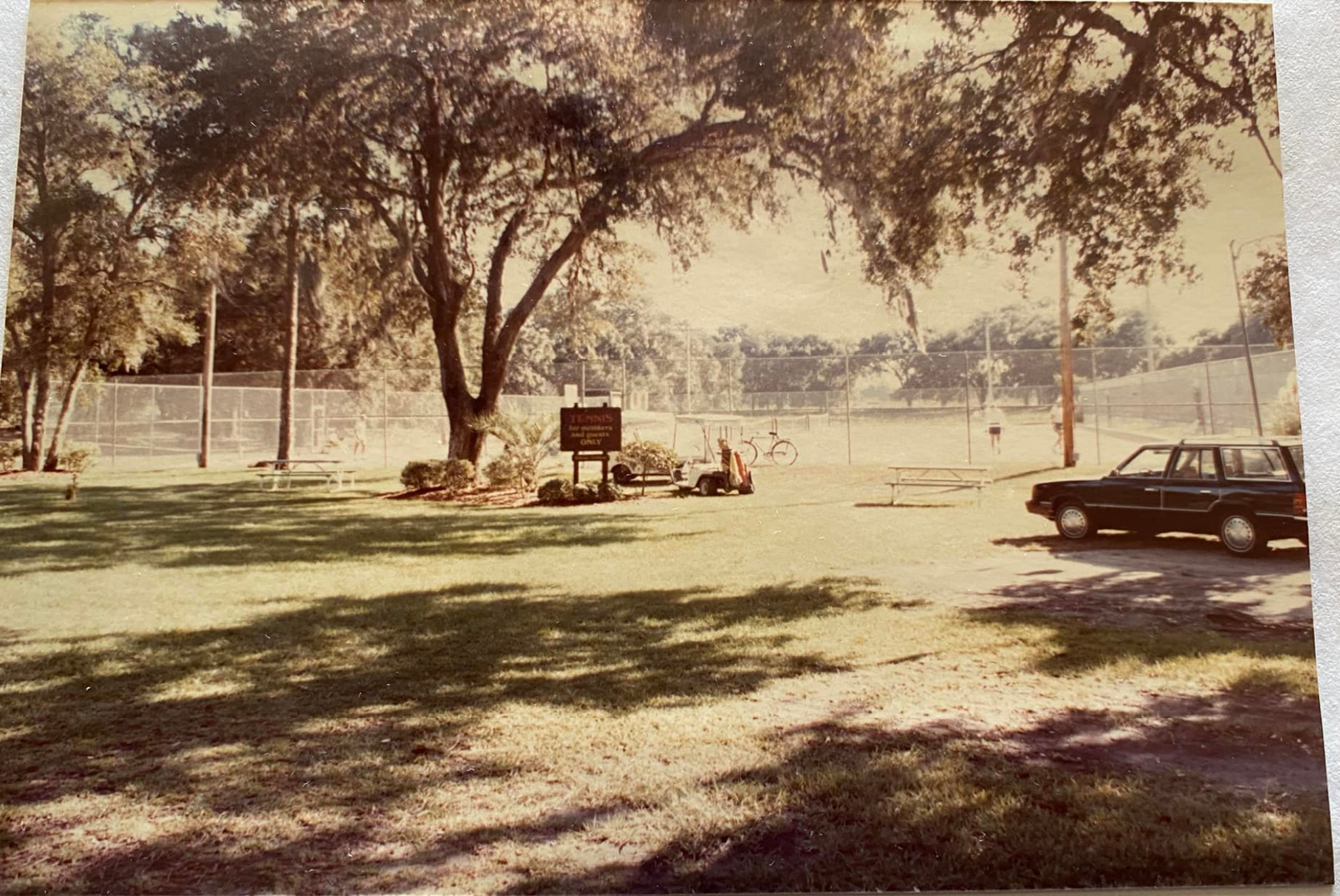
CONTROLLED ENTRANCE ALONG STATE ROAD 468
INTO PHASE II





SOUTH VIEW ALONG ROBIN ROAD WITH PHASE III
AND HOLE 11 OF GOLF COURSE ON THE RIGHT





TENNIS FACILITIES





TYPICAL INTERIOR VIEW OF UNDEVELOPED PHASE III LAND



TYPICAL PHASE I DEVELOPMENT











CLUBHOUSE FACILITIES



TYPICAL INTERIOR ROAD - PHASE II





BOAT DOCK AND CANAL IN PHASE I





ATTRACTIVE RETENTION POND - PHASE I



CONTINENTAL
LABORATORY
TECHCORP



SOUTH FAIRWAY VIEW OF HOLE 13
WITH PROPOSED BLOCK 17 TO THE REAR

139



TYPICAL DEVELOPING AREA IN PHASE II