

DRAINAGE

652 L.F.	15" ACCMP	@ \$	12.50/L.F.	\$ 8,150.00
480 L.F.	18" ACCMP	@ \$	15.50/L.F.	7,440.00
200 L.F.	24" ACCMP	@ \$	24.25/L.F.	4,850.00
188 L.F.	11" x 18" ACCMP	@ \$	12.50 L.F.	2,350.00
828 L.F.	13" x 22" ACCMP	@ \$	15.50/L.F.	12,834.00
1,648 L.F.	18" x 29" ACCMP	@ \$	18.00/L.F.	29,664.00
1,309 L.F.	22" x 36" ACCMP	@ \$	24.25/L.F.	31,743.00
608 L.F.	27" x 43" ACCMP	@ \$	28.50/L.F.	17,328.00
5 Ea.	Manholes	@ \$	600.00/Ea.	3,000.00
13 Ea.	Type "C" Inlets	@ \$	500.00/Ea.	6,500.00
1,555 L.F.	4" P.V.C.	@ \$	4.00/L.F.	6,220.00
90 L.F.	15" L.F.	@ \$	15.00/L.F.	1,350.00
3,400 L.F.	Underdrain	@ \$	9.00/L.F.	30,600.00
3 Ea.	5,000 G.P.M. Axial Flow Pumps	@ \$10,000.00/Ea.		30,000.00
1 Ea.	250 G.P.M. Centrifugal Pump	@ \$ 1,000.00/Ea.		1,000.00
1 Ea.	Lift Station	@ \$ 4,000.00/Ea.		4,000.00
8,000 C.Y.	Excavation	@ \$ 3.00/C.Y.		24,000.00
7,000 S.Y.	Sod	@ \$ 1.10/S.Y.		<u>7,700.00</u>
				\$228,729.00



CONTINENTAL COUNTRY CLUB, INC.

PHASE I  
DEVELOPMENT COST ESTIMATES  
J-113

MAY 5, 1983

PREPARED BY  
SPRINGSTEAD AND ASSOCIATES, INC.  
BUSHNELL - LEESBURG, FLORIDA



SUMMARY OF COST ESTIMATES  
PHASE I

Water Distribution	\$224,480.00
Water Supply	32,506.00
Sewage Collection	38,600.00
Streets	269,117.00
Fill	270,000.00
Lot Development	120,000.00
Drainage	<u>228,729.00</u>
	\$1,183,432.00
+ 10% Contingencies	<u>118,343.00</u>
	\$1,301,775.00
+ 11.25% Engineering	<u>146,450.00</u>
	\$1,448,225.00



LAKE  
OKAHUMPKA

SMALL PARCELS

S. R. 44

22

23

24

J.C. BAILEY  
362 AC.

J.C. BAILEY  
187 AC.

HIDE CO.  
3 AC.

CONTINENTAL C.C. & TIMBERWOOD'S

SANDALWOOD

C. R. 468

27

26

2

BIGHAM HIDE CO.  
299 AC.

J.C. BAILEY  
410 AC.

J.C. BAILEY  
520 AC.

C.R. EMERSON  
38.7 AC.

F. WARD  
15 AC.

C.R. EMERSON JR.  
38 AC.

J.C. BAILEY  
20 AC.

FLOR.

B

D.

HIDE CO.

3 AC.

HIDE CO.

HIDE CO.

HIDE CO.

HIDE CO.

HIDE CO.

HIDE CO.

HIDE CO.



CONSTRUCTION COST ESTIMATES (cont.)

SEWAGE COLLECTION SYSTEM

3 Ea.	Rebuild Lift Stations	@ \$5,000.00/Ea.	\$ 15,000.00
11,800 L.F.	Clean & Refurbish Sewers	@ \$ 2.00/L.F.	<u>23,600.00</u>
			\$ 38,600.00

STREETS

10.3 Ac.	Clearing and Grubbing	@ \$1,200.00/Ac.	\$ 12,360.00
67,340 S.Y.	Rough Grading	@ \$ 0.20/S.Y.	13,468.00
30,390 S.Y.	12" Stabilized Subgrade	@ \$ 1.50/S.Y.	45,585.00
27,661 S.Y.	6" Limerock Base	@ \$ 3.75/S.Y.	103,729.00
26,351 S.Y.	Prime and sand seal	@ \$ 0.30/S.Y.	7,905.00
26,351 S.Y.	Type II Asphaltic Concrete	@ \$ 2.50/S.Y.	65,878.00
40,383 S.Y.	Finish Grading	@ \$ 0.20/S.Y.	8,077.00
40,383 S.Y.	Seed and Mulch	@ \$ 0.30/S.Y.	<u>12,115.00</u>
			\$269,117.00

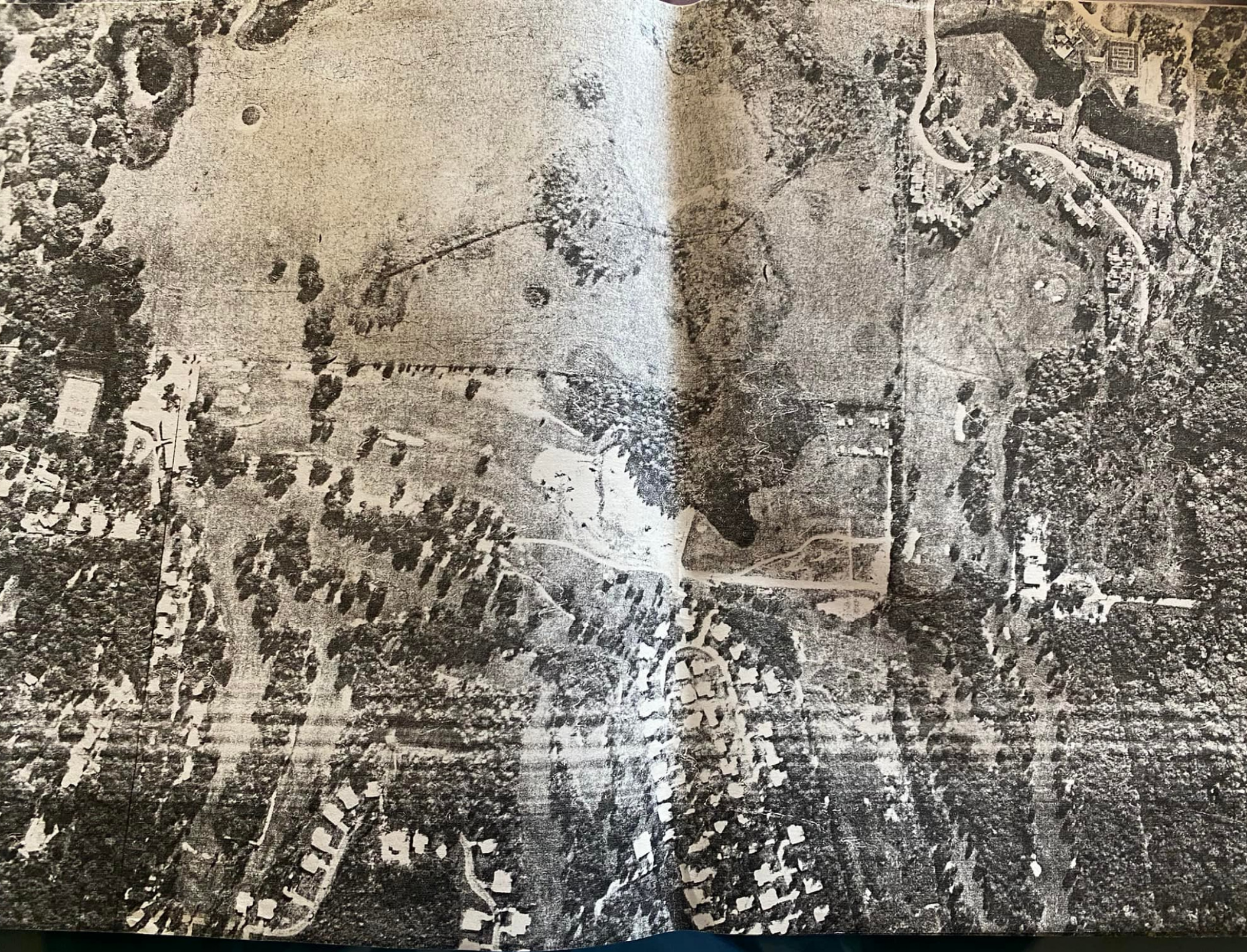
ROADWAY AND LOT FILL

90,000 C.Y.	Fill	@ \$ 3.00/C.Y.	\$270,000.00
-------------	------	----------------	--------------

LOT DEVELOPMENT

200	Lots	@ \$ 600.00/Lot	\$120,000.00
-----	------	-----------------	--------------







CONTINENTAL COUNTRY CLUB, INC.

RESORT

J-113

SUMMARY OF INVENTORY REPLACEMENT VALUE ESTIMATES

SEWER SYSTEM	\$160,416.00
WATER SYSTEM	74,668.75
ROADS	105,326.70
MISC.	<u>23,250.80</u>
TOTAL	\$363,662.25











CONTINENTAL COUNTRY CLUB, INC.  
VILLAGE

INVENTORY REPLACEMENT VALUE ESTIMATES  
J-113

SEPTEMBER, 1982

SPRINGSTEAD AND ASSOCIATES, INC. *Consulting Engineers*  
800 N. LEE ST. • P.O. BOX 448 • LEESBURG, FLA. 32748 • (904) 787-1414  
WEST HWY 476 • P.O. BOX 1448 • BUSHNELL, FLA. 33513 • (904) 793-3639

CONTINENTAL COUNTRY CLUB,  
RESORT

INVENTORY REPLACEMENT VALUE ESTIMATES  
J-113

NOVEMBER

SPRINGSTEAD AND ASSOCIATES, INC.  
800 N. LEE ST. • P.O. BOX 448 • LEESBURG, FLA. 32748 • (904) 787-1414  
WEST HWY 476 • P.O. BOX 1448 • BUSHNELL, FLA. 33513 • (904) 793-3639

CONTINENTAL COUNTRY CLUB, INC.  
RESORT

INVENTORY REPLACEMENT VALUE ESTIMATES  
J-113

NOVEMBER, 1982

SPRINGSTEAD AND ASSOCIATES, INC. *Consulting Engineers*  
800 N. LEE ST. • P.O. BOX 448 • LEESBURG, FLA. 32748 • (904) 787-1414  
WEST HWY 476 • P.O. BOX 1448 • BUSHNELL, FLA. 33513 • (904) 793-3639

CONTINENTAL COUNTRY CLUB, INC.

PHASE I  
DEVELOPMENT COST ESTIMATES  
J-113

MAY 5, 1983

SPRINGSTEAD AND ASSOCIATES, INC. *Consulting Engineers - Planners - Surveyors*  
800 N. LEE ST. • P.O. BOX 448 • LEESBURG, FLA. 32748 • (904) 787-1414  
WEST HWY 476 • P.O. BOX 1448 • BUSHNELL, FLA. 33513 • (904) 793-3639



CONSTRUCTION COST ESTIMATES

WATER DISTRIBUTION SYSTEM

9,550 L.F.	8" PVC Water Main	@ \$	8.00/L.F.	\$76,400.00
6,655 L.F.	6" PVC Water Main	@ \$	6.00/L.F.	39,930.00
23 Ea.	8" Gate Valves	@ \$	425.00/Ea.	9,775.00
19 Ea.	6" Gate Valves	@ \$	325.00/Ea.	6,175.00
9,500 LB.	Cast Iron Fittings	@ \$	1.25/Lb.	11,875.00
31 Ea.	Fire Hydrant Assemblies	@ \$1,100.00/Ea.		34,100.00
215 Ea.	Service Connections (Rebuilt)	@ \$	100.00/Ea.	21,500.00
215 Ea.	Meters with box	@ \$	115.00/Ea.	<u>24,725.00</u>
				\$224,480.00

WATER SUPPLY SYSTEM

We11 No. 2

L.S.	Run 8 Hr. Pumping Test @ 750 GPM	@ \$	L.S.	\$ 2,000.00
1 Ea.	750 GPM Vertical Turbine Pump	@ \$4,455.00/Ea.		4,455.00
1 Ea.	50 H.P. Electric Motor w/Controls	@ \$3,774.00/Ea.		3,774.00
1 Ea.	2" Air Relief Valve	@ \$	237.00/Ea.	237.00
1 Ea.	8" x 8" x 6" Tee	@ \$	150.00/Ea.	150.00
1 Ea.	8" Check Valve	@ \$	440.00/Ea.	440.00
1 Ea.	8" Tube Meter	@ \$1,000.00/Ea.		1,000.00
1 Ea.	8" Pump Control Valve	@ \$2,500.00/Ea.		2,500.00
1 Ea.	8" Gate Valve	@ \$	350.00/Ea.	350.00
240 S.F.	Pump House	@ \$	25.00/S.F.	6,000.00
L.S.	Electric Wiring	@ \$	L.S.	4,000.00
L.S.	Pump Controls	@ \$	L.S.	2,000.00
L.S.	Misc. Piping & Installation	@ \$	L.S.	3,000.00
L.S.	Chlorination Equipment	@ \$	L.S.	<u>2,600.00</u>
				\$ 32,506.00



LAKE

OKAHUMPKA

SMALL PARCELS

C. R. 44A

S. R.

21

22

23

J.C. BAILEY  
362 AC.

J.C. BAILEY  
187 AC.

BIGHAM HIDE CO.  
146.3 AC.

CONTINENTAL C.G. & TIMBERWOOD'S

SANDAL WOOD  
30\* (NET)

C. R. 468

27

BIGHAM HIDE CO.  
299 AC.

26

J.C. BAILEY  
410 AC.

CO.

8

C.R. EMERSON  
38.7 AC.

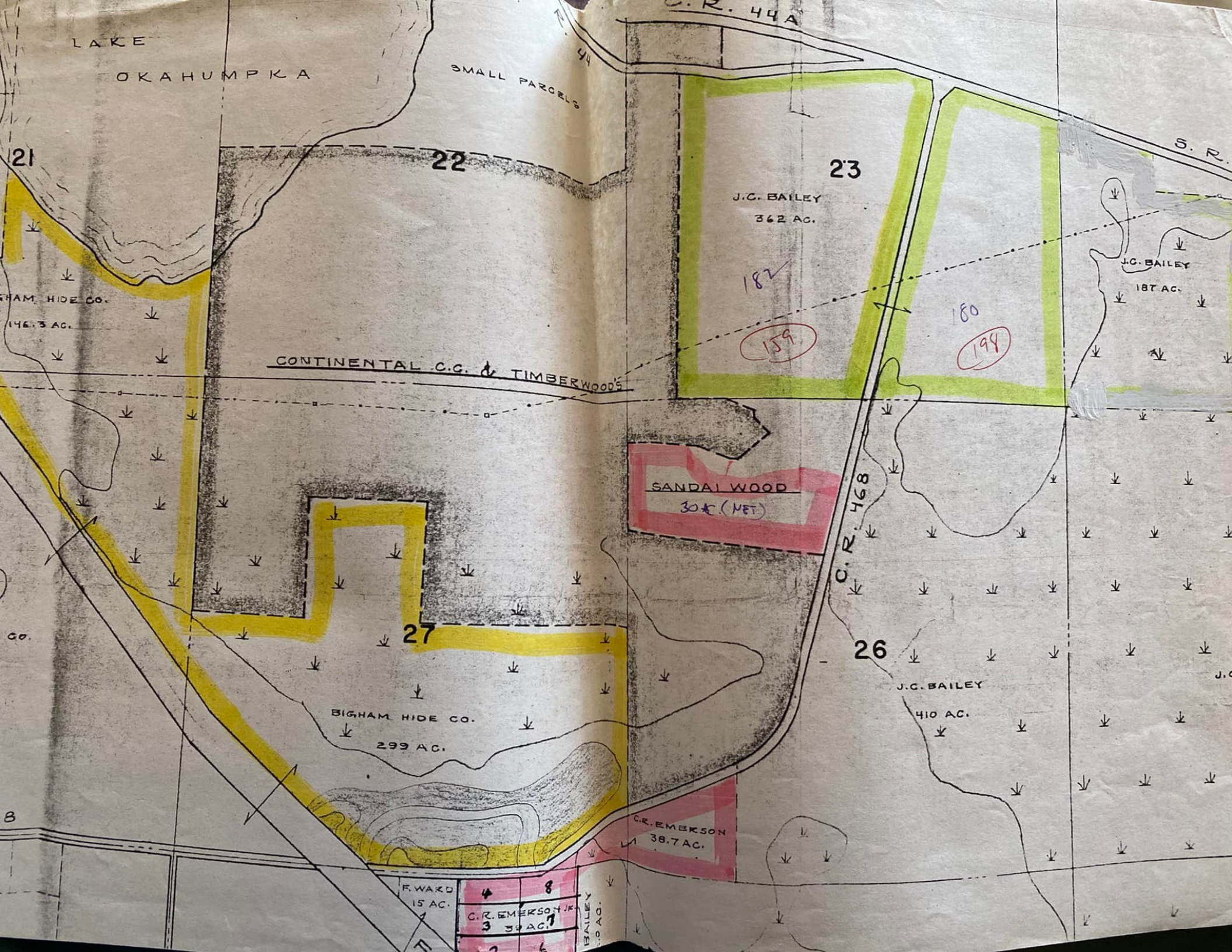
F. WARD  
15 AC.

4	8
C.R. EMERSON JR. 3	39 AC. 7
2	6

BAILEY  
10 AC.

182  
159

180  
194





SOUTH FP  
NORTH FP

