







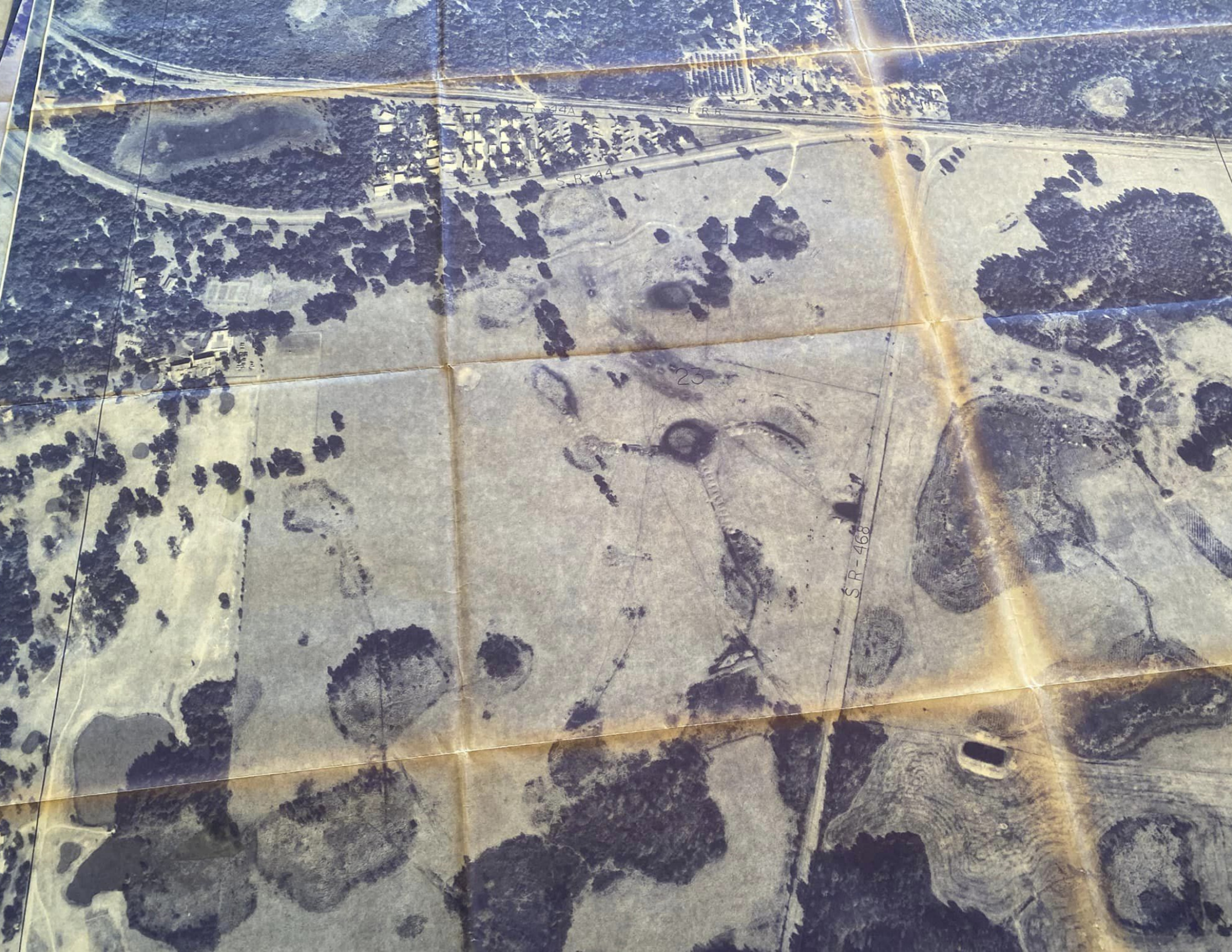


SUMTER COUNTY  
FLORIDA



STATEMENT PAPER 001

| DATE | SECTION | TOWNSHIP | RANGE | SUBSECTION | SECTION |
|------|---------|----------|-------|------------|---------|
| 1953 | 15      | 15       | 15    | 15         | 15      |



S.R. 44A

S.R. 44

S.R. 44

25

S.R. 468



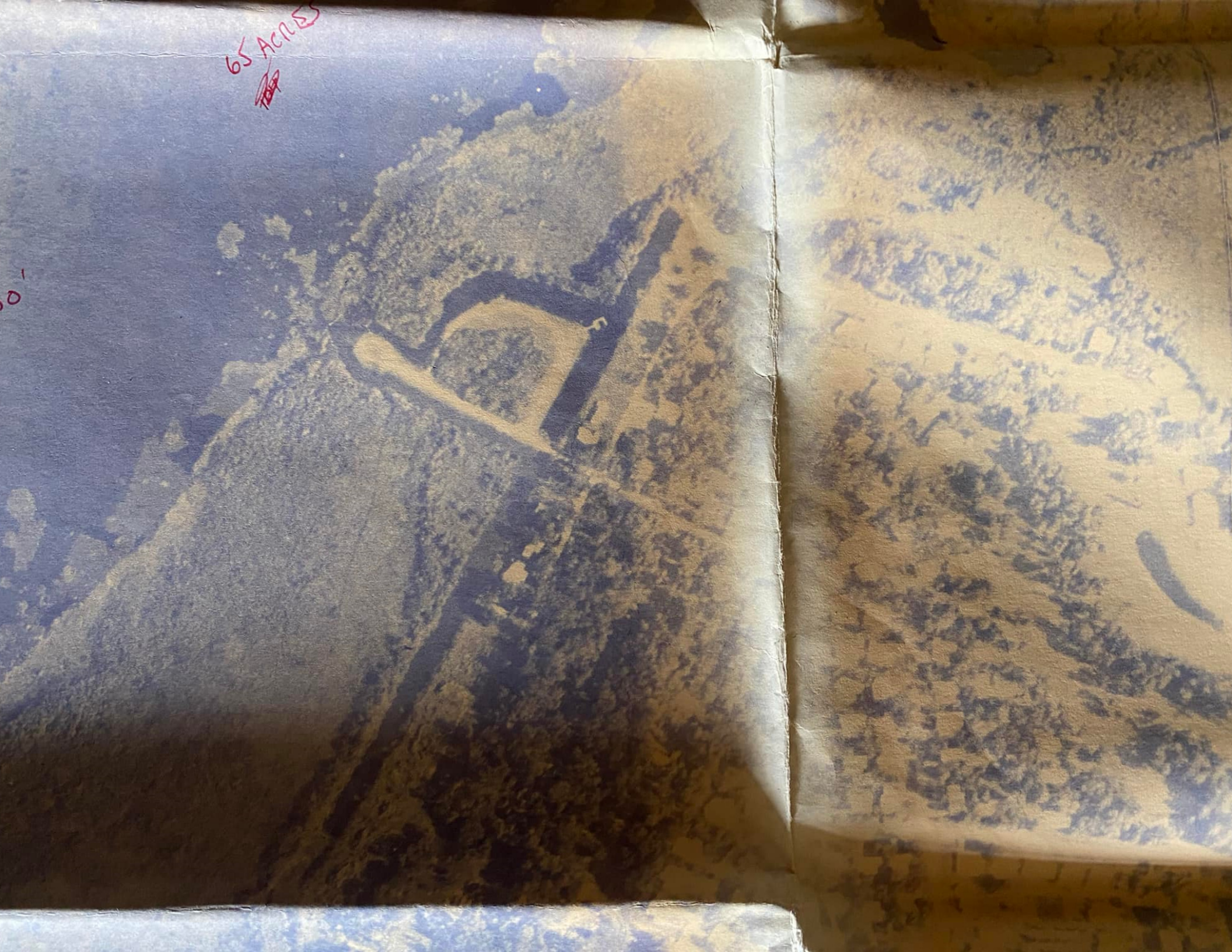
1" = 100'





65 ACRES  
~~100~~

50'





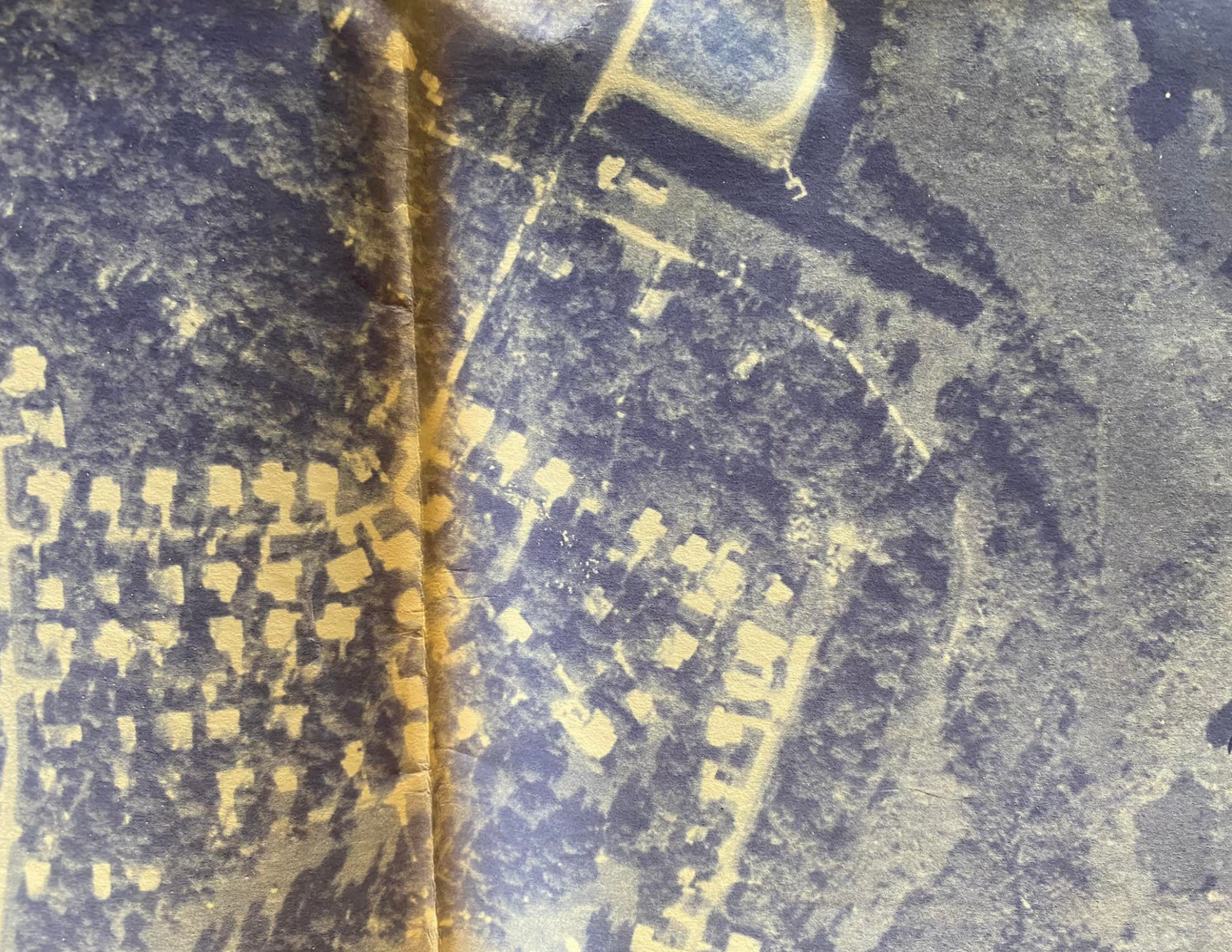
65 Miles

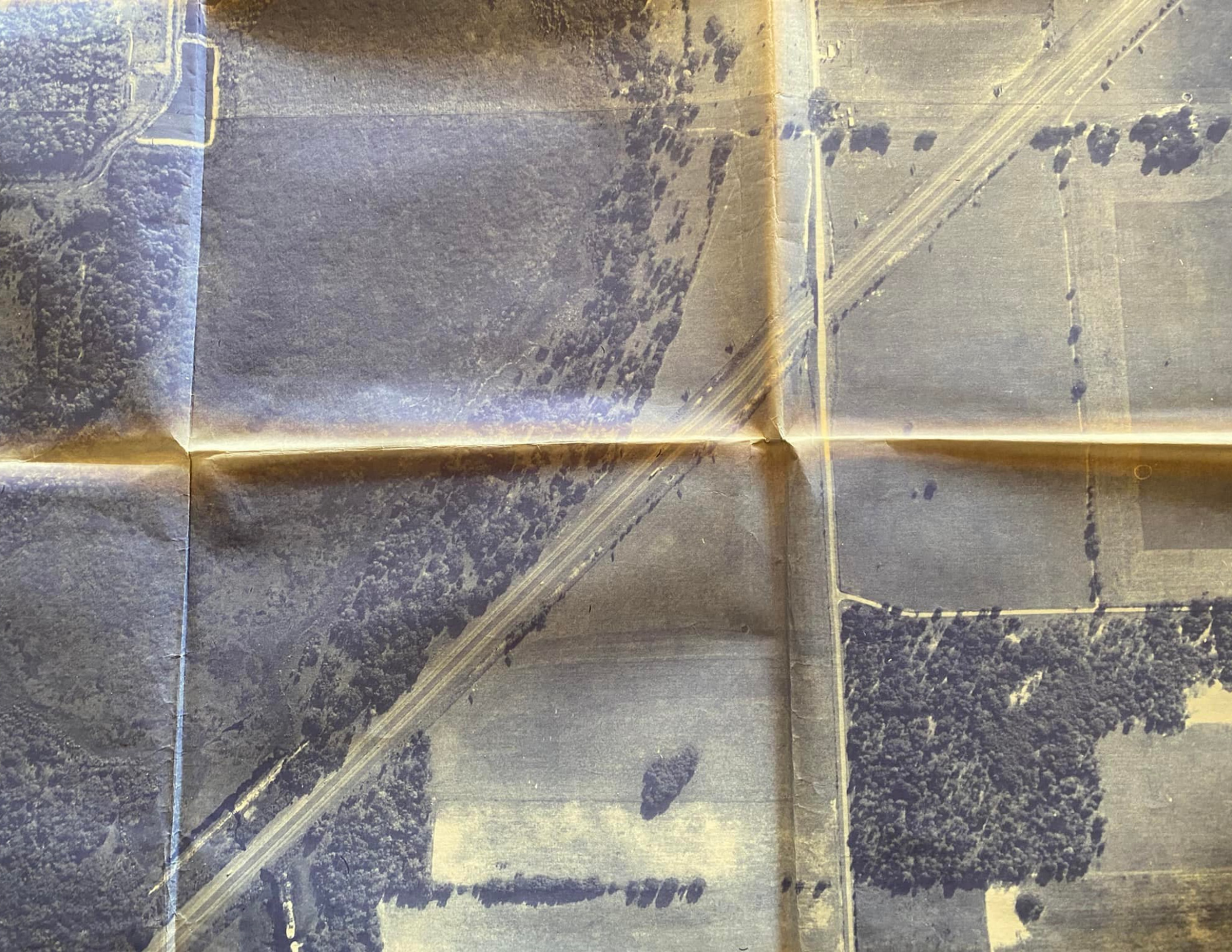
1" = 300'

1946



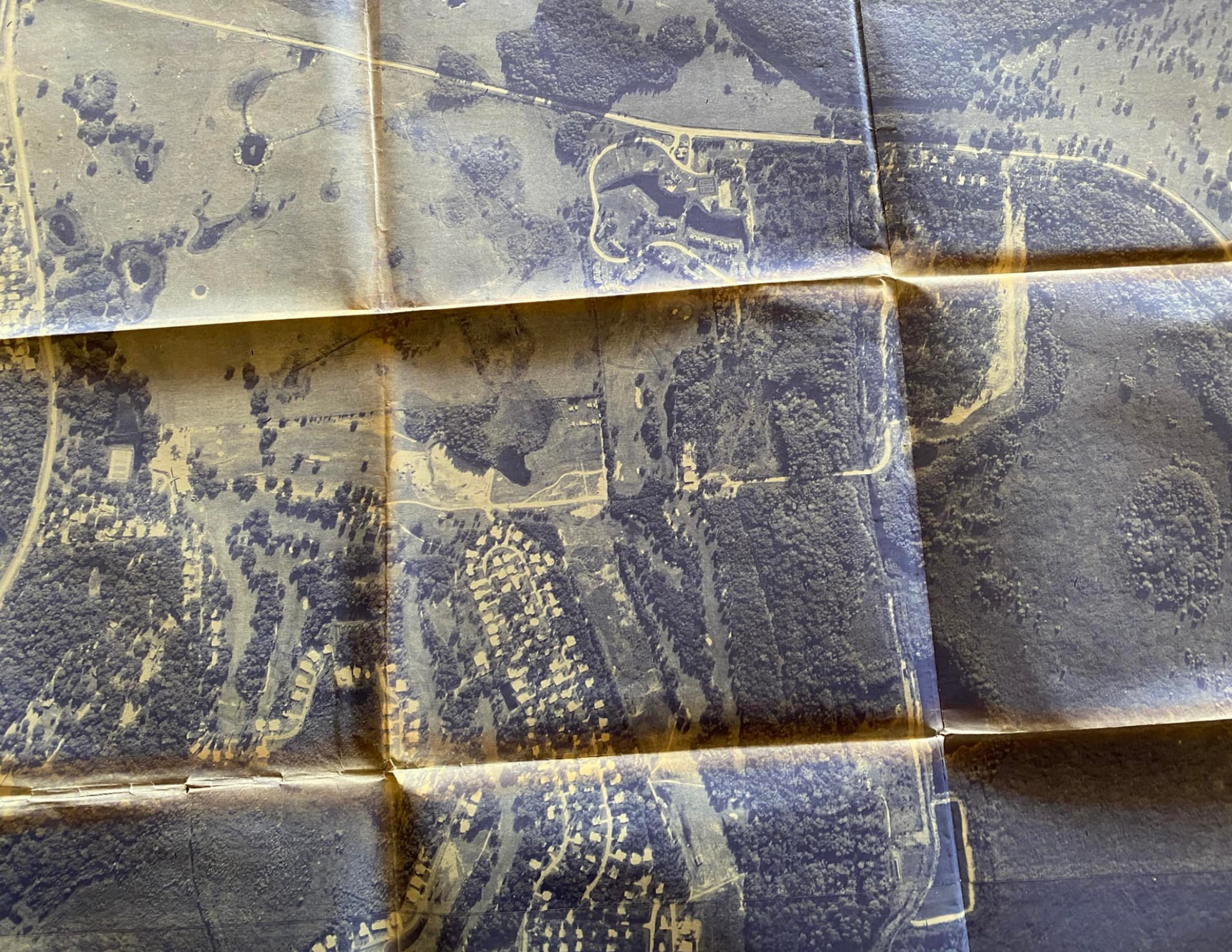
LAND'S RELIEF IN





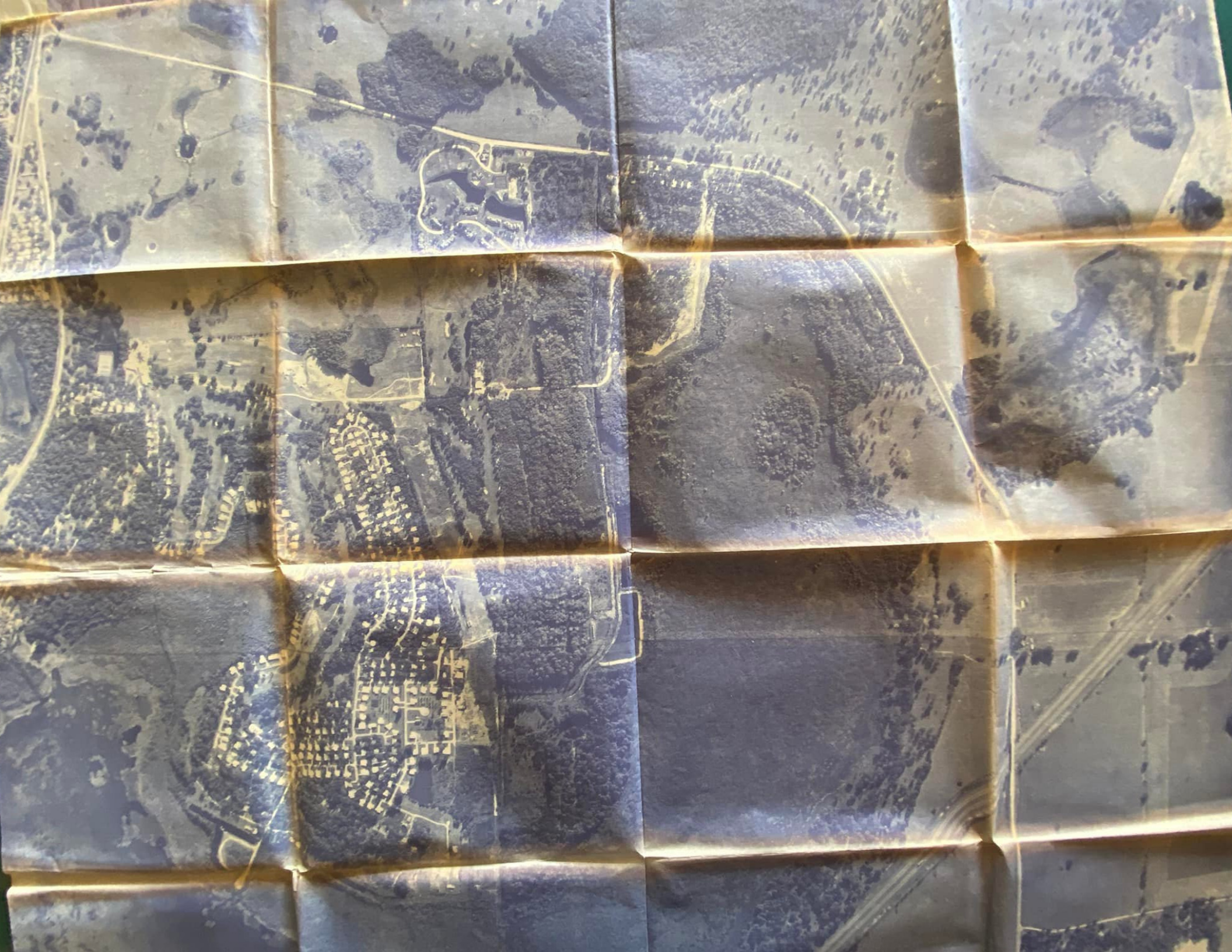












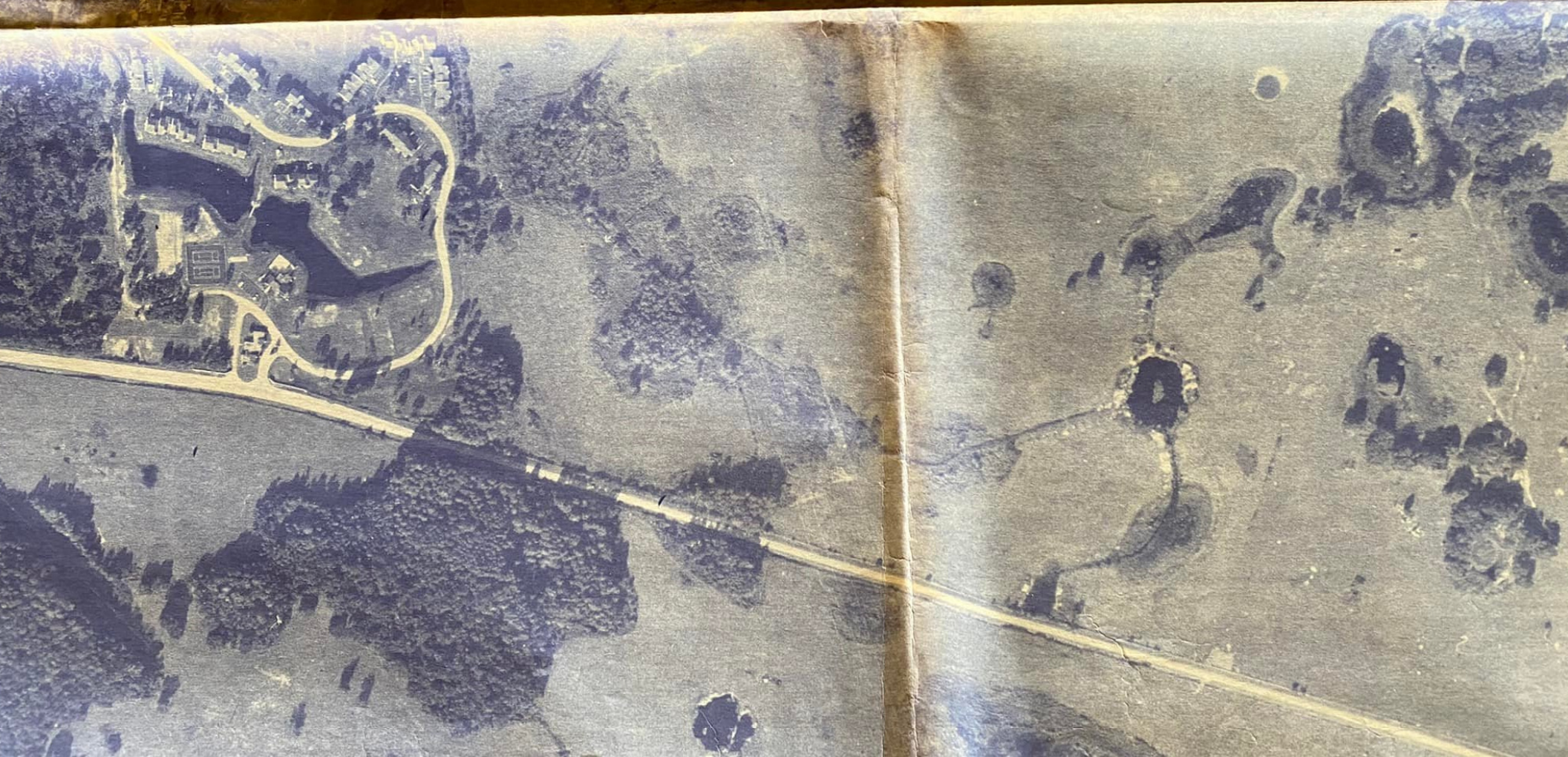
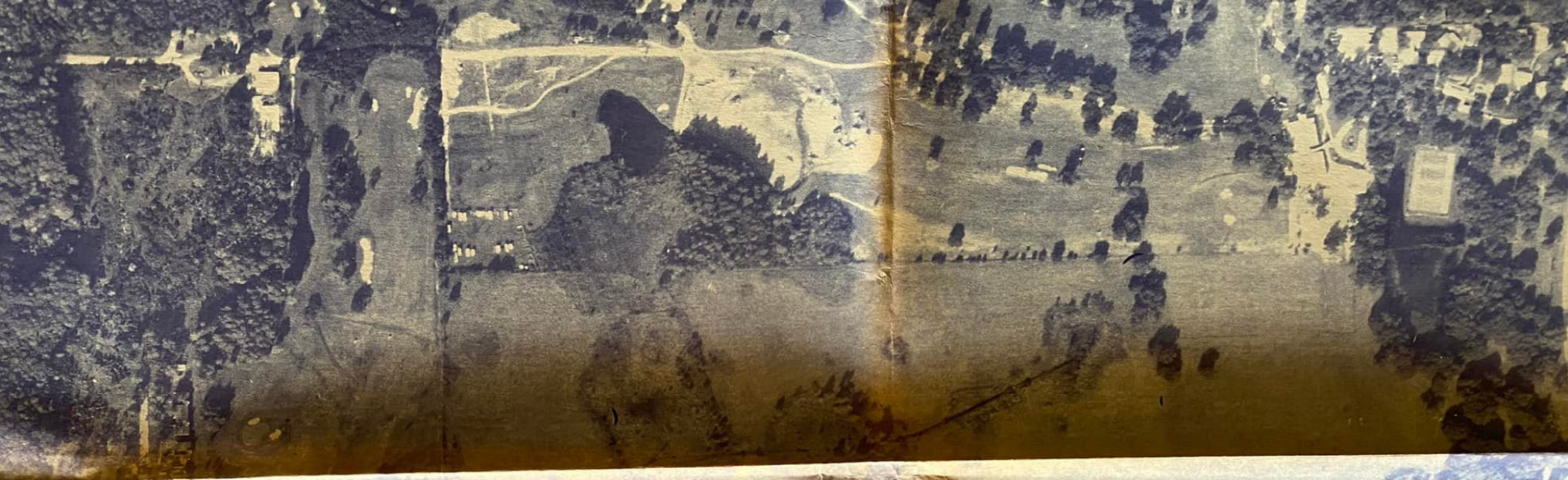


65 ACRES

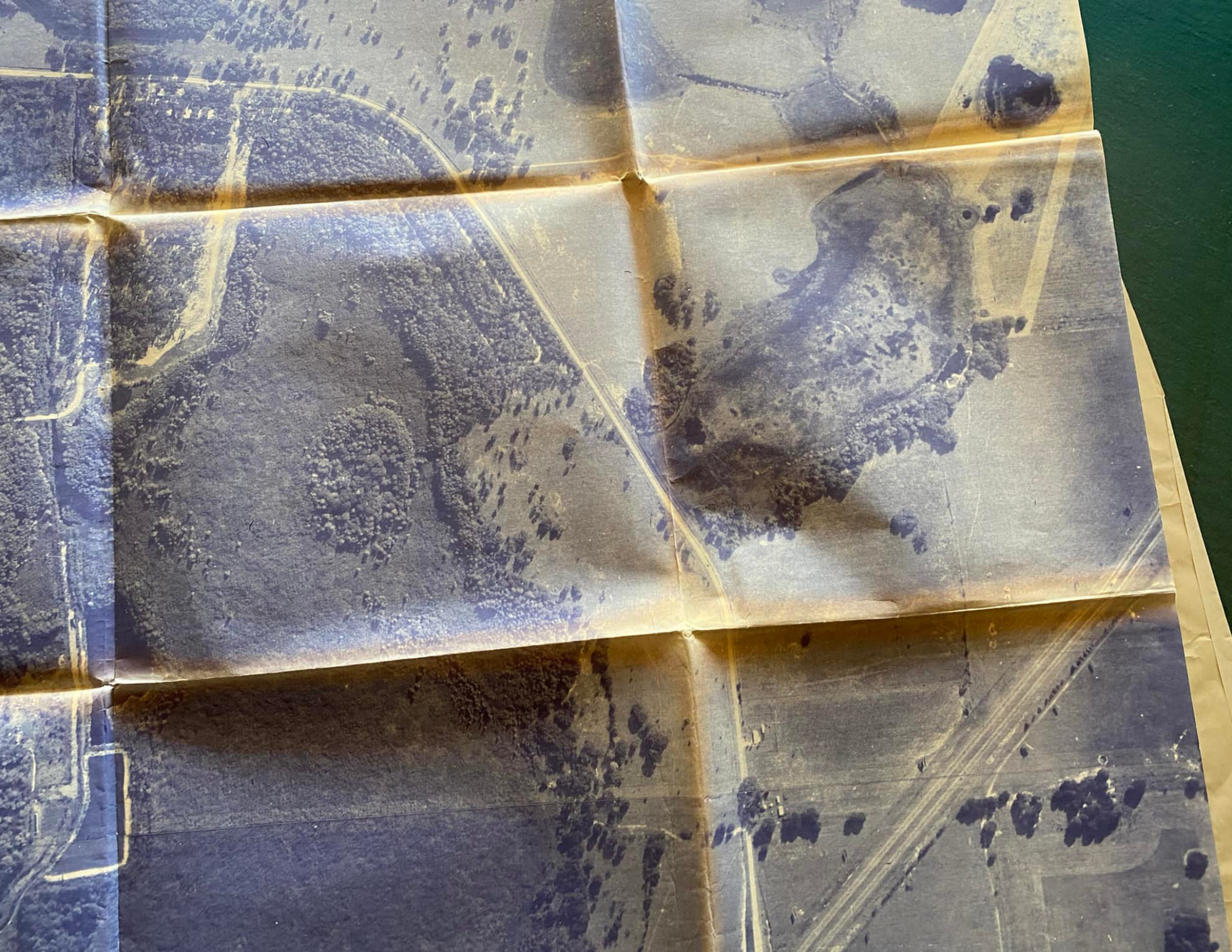
11" = 300'

6 ACRES

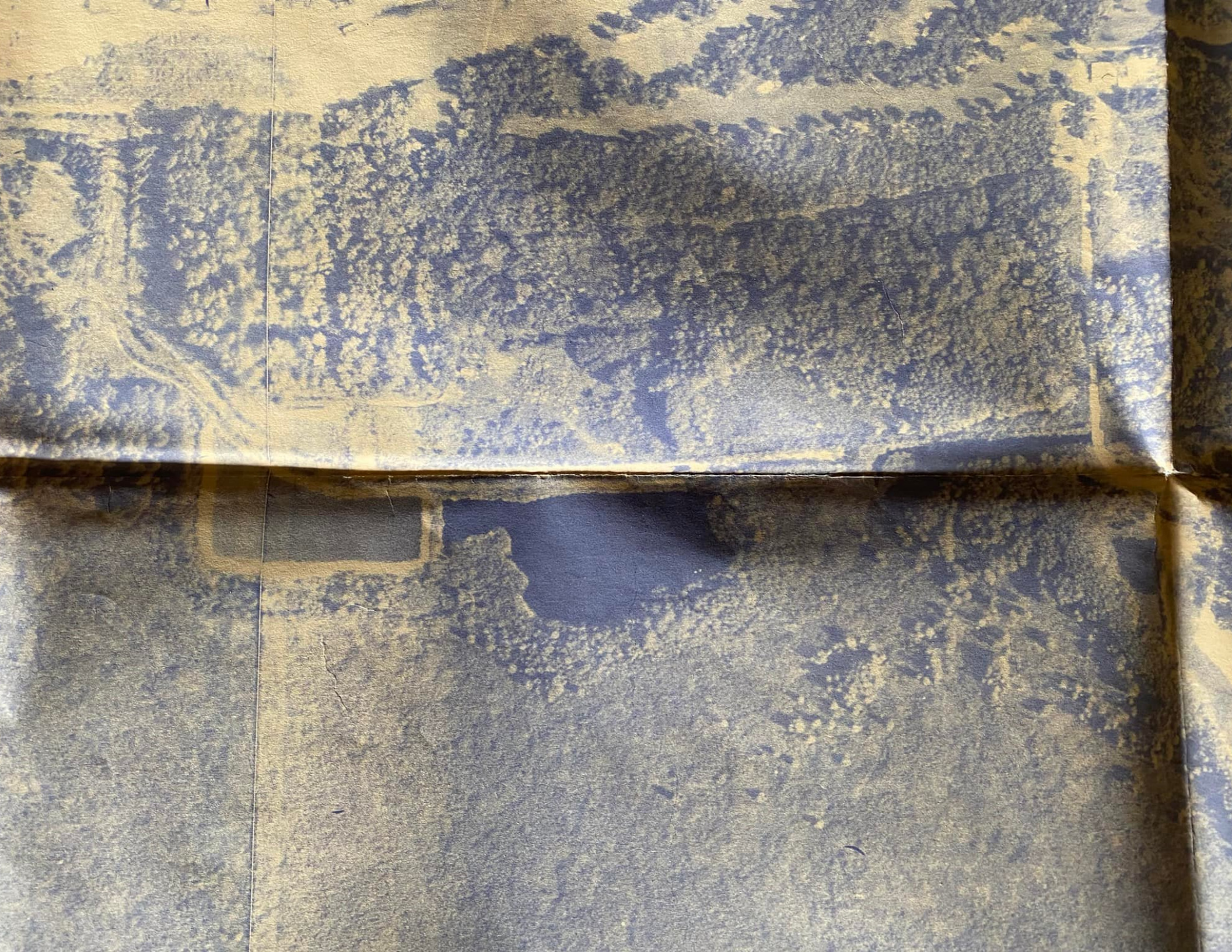
0





















**TIMBERWOODS ESTATES**

Handwritten notes and signatures in blue ink are visible on the left side of the document, including what appears to be a signature and some illegible text.



Additional handwritten notes and signatures in blue ink are visible at the bottom of the document, including another signature and some illegible text.



1:100





